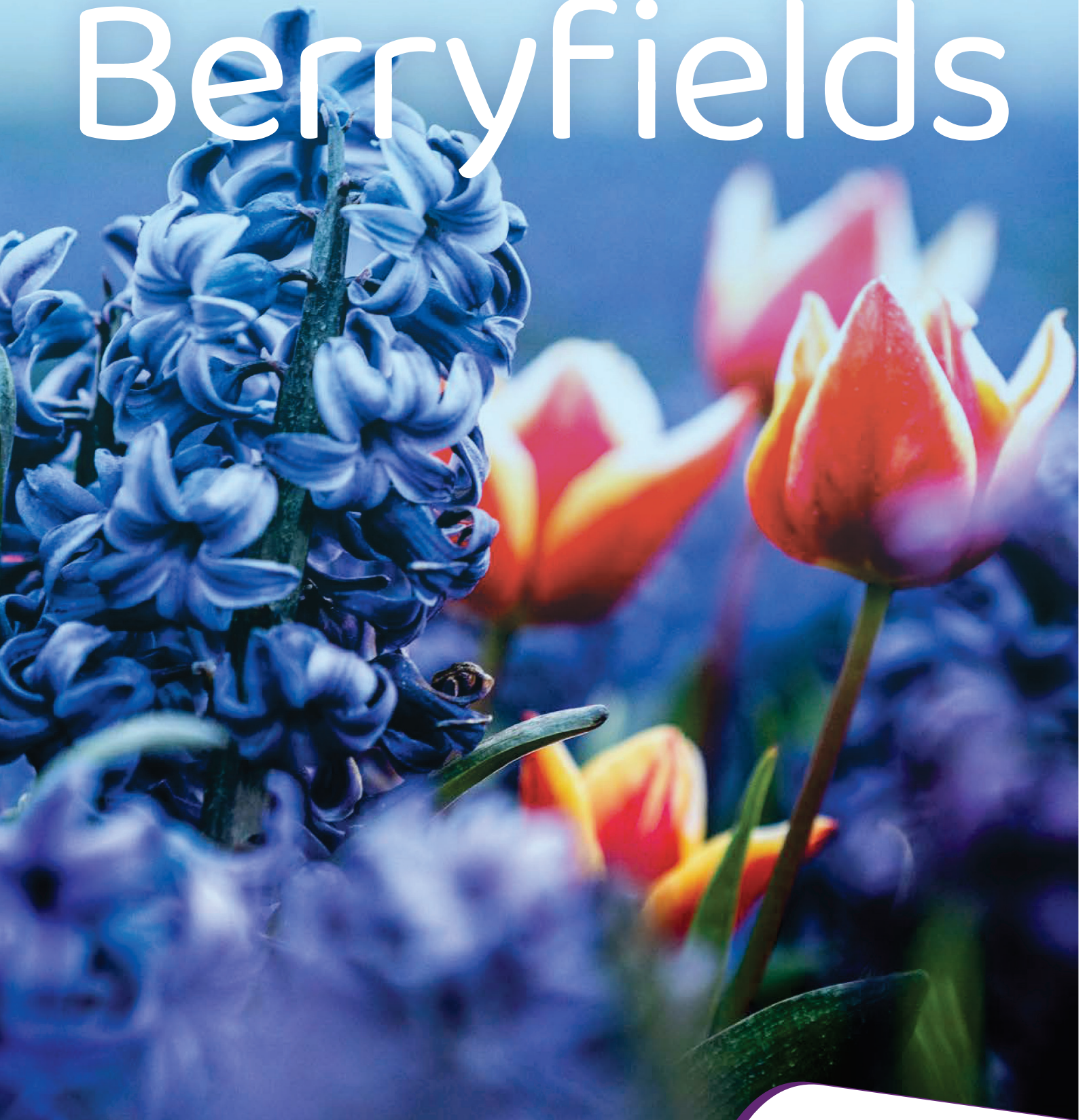


Our

APRIL 2024

Berryfields



Berryfields
Parish Council

A word from the Chairman

Welcome to the Spring edition of Our Berryfields. Despite the never-ending rain, the weather is at least beginning to get warmer and hopefully more sunshine will follow!

I wish everyone a Happy Easter and Eid Mubarak for those that celebrate and hope everyone enjoyed some time with family and friends.

Once again, as we do each year, the Parish Council meet to discuss and agree the budget for the coming year and the precept amount on our Council Tax for Berryfields. We are still incredibly lucky as we have one of the lowest precepts of many Parishes.

However, our estate continues to grow and with that so does the cost of maintaining it, and as the building work ends, the Parish takes over more land and parks on Berryfields. This all means we must ensure we have enough funds for the upkeep of the Parish while trying to keep the increase as low as we are able.

As we look toward the summer and warmer months there is always lots to look forward to over the coming months, both around Berryfields and at our hall, details of some of these events you will find in this edition. Both our local schools are holding events, do go along and support them!

The work on the Viewing Mound, the new MUGA and playground on Roman Park is almost complete and great additions to the facilities at our community hall and park.

The Berry Pickers continue to do an amazing job around Berryfields, if you can help them and our community out by either joining one of their events or picking a bit of litter from your bit of Berryfields it all helps, especially given the winds we have recently.

As well as the many classes and activities held at Roman Park Hall, a coffee morning is held the first Tuesday morning of each month and is open to anyone to help continue to grow our community and reach out to anyone who looking for a friendly face and meet new people.

Our foodbank continues to run every Thursday at 10.30 – 12.00, run by our dedicated volunteers to help anyone who needs it, please come if you ever need that extra support, no questions asked.

The food bank is purely reliant on donations and grant funding. We have been lucky to have received a grant from Buckinghamshire Council (Helping Hands) and vouchers for Farm Foods. However, if you have food/toiletries in your cupboards you don't need or can spare an extra tin of food when you do your weekly shop, the foodbank would be grateful for your support. A box is situated outside Roman Park Hall for any donations.

Many of you have seen the notices posted by the Consortium and its contractors regarding the coming works to the roads and pathways around the estate. While we know at times this can be disruptive, the work is necessary and will be carried out as safely and quickly as possible to enable the handing over the running of our roads to Bucks Council Highways and Transport.

On Good Friday we held a small Easter event for the community which many of you came along to and ran a competition for the children to win an Easter Egg. The children had great fun seeing how many items they could fit into a little egg, amazingly the winners fitted over 40 items into such a tiny space, well done!

Every month we hold our public meetings, open to all. As well as these we also hold our Annual Parish Meeting on Thursday 9th May. I hope you will come along and see what continuing plans we have for the Parish and to talk about any topics about Berryfields you have.

I hope to see you at all our events, both at the hall and around our community and as always please get in touch if you have any questions.

Chairman,
Cllr Laurilee Green



Berry Pickers

Berrypickers have been active in the community throughout the winter months. We joined Aylesbury Wombles for a massive pick in the lay-by on the A41 in January, and several smaller groups have tackled local ditches and open areas, as well as individuals targeting the areas where they live. We managed to enlist some hard core Wombles with waders to help clear water filled ditches. We like to encourage anyone to join us, and have grabbers and hoops which can be borrowed, either on a group pick, or to tackle a local spot as an individual. Every piece of litter binned is a piece taken out of the environment, and really does make a difference, whether it's 50 bags or 5 individual pieces. You may have seen stickers on some bins advertising the LitterLotto app, where you can win cash prizes just for binning litter. Carol is proof it can be done and could be you!



The Countryside Counts

At last, it feels like it's stopped raining, the fields are starting to dry up, spring is passing in a flash and summer is on the horizon. It's been a stressful, worrying few months for farmers with a big emphasis on mental health in agriculture due to the unprecedented and continuous rain affecting food production, animal welfare and food security in the UK.

Winter crops have failed due to water logged land; a lot of spring crops haven't been planted with fields being left fallow for the first time in generations. Spring crops that have been planted are late and are going to yield a lot less than normal. Lambing has been the hardest it's ever been with water logged fields leading to a higher than normal loss of life with ewes concentrating on keeping one lamb alive but abandoning the other. It's been relentless, working 20-22 hours a day in all weather, picking up cold, wet and poorly lambs trying to save lives. Cattle haven't been turned out to the fields yet, they don't really like living in lakes and wet fields, this has had a knock-on effect of using more straw, silage and feed increasing the costs, workloads and stress for farmers. Inevitably all of this will lead to a higher price for the consumer, resulting in more debates about food security, government payments to farmers for rewilding, greening and tree planting to offset the carbon footprint supposedly produced by all the planes, cars and factories to tackle the ever-increasing climate change. Swathes of land being taken out of food production while the population keeps growing.

Tomorrow is always another day; the sun is hopefully shining, and across the UK farmers will be working their hardest looking after the beautiful countryside and its amazing wildlife, while trying to keep food in the shops, supermarkets and on the kitchen tables.

COMMUNITY EVENTS
AT
ROMAN PARK HALL

MAY

YOUTH CLUB - 10TH

YOUTH CLUB - 24TH

COMMUNITY SOCIAL EVENING 31ST

JUNE

YOUTH CLUB - 7TH

QUIZ NIGHT - 14TH

YOUTH CLUB - 21ST

SCHOOL DISCO - 28TH

BUCKINGHAMSHIRE
RAILWAY
CENTRE

A DRAGON'S QUEST

CALLING ALL KNIGHTS & PRINCESSES...

MONDAY 27TH MAY

...GET UP CLOSE AND PERSONAL WITH
A HUGE, SMOKE-BREATHING DRAGON!

WWW.BUCKSRAILCENTRE.ORG



BUCKINGHAMSHIRE
RAILWAY
CENTRE

Bluey

SUNDAY
9TH
JUNE

**BLUEY WILL BE HERE
MAKING APPEARANCES
AT INTERVALS
THROUGHOUT THE DAY!**



WWW.BUCKSRAILCENTRE.ORG



ROMAN PARK HALL

AVAILABLE FOR HIRE!

Wedding Receptions | Christenings | Funerals | Conferences |
Birthday Parties | Dinners, Banquets or Balls | Office Hire

Our halls are a popular location for hosting parties and events. We offer a bespoke service, to cater to your specific needs. Our modern and spacious halls can host up to 200 guests. They are adaptable, and can be decorated to your taste. There is access to a fully stocked bar. We also have office space available for hire. There will always be friendly and accommodating staff on hand to ensure your event runs smoothly. We have ample free parking on site, with a train station and hotel nearby for those travelling from afar.

FOR MORE INFO, CONTACT US AT

booking@berryfieldspc.org
01296 925755
ROMAN PARK HALL,
AYLESBURY, HP18 0YT



Green Ridge PTA Presents

SUMMER FETE

SATURDAY 8TH JUNE 2024

SAVE THE DATE!

BBQ Refreshments Donkey Rides
Games
VR Experience Inflatables And more...



For the latest information:

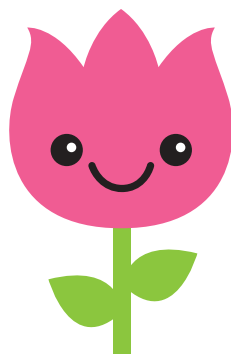


WHEN DO
MONKEYS FALL
FROM THE SKY?



DURING APE-IL SHOWERS

WHAT FLOWERS
GROW ON FACES?



TULIPS (TWO LIPS)

DOES FEBRUARY
LIKE MARCH?



NO. BUT APRIL MAY

Back by Popular Demand



MIDNIGHT WALK WEEKEND

Florence Nightingale Hospice Charity has brought back its Midnight Walk event as part of the Hospice's 35th anniversary, which will be hosted at

Roman Park Hall, Aylesbury on Saturday 22nd June

For more information, sponsorship forms and to purchase tickets, please visit:

www.fnhospice.org.uk/midnightwalk



As we all know, spring and summer are soon to arrive and Berryfields is a lovely area with children's parks and lovely surroundings for you to be able to go for a stroll, play in the parks and even take your dogs for that long walk!

We kindly ask if dog owners could pick up after their dog and help keep Berryfields a safe clean space for all to walk and play. There are many dog poo disposal bins located around Berryfields

AFFINITY

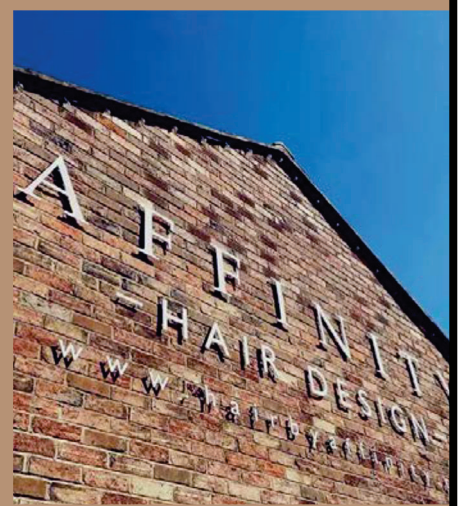
HAIR DESIGN

Professional Styling & Hair Salon



Affinity Hair Design provides professional hair styling and a premium salon experience whilst being situated in the scenic Waddesdon High Street, making for a relaxing experience whilst in the hands of our experienced hairdressers.

Cut & Blow Dry |
Colouring | Children |
Barbering ... and many
more!



62 High Street
Waddesdon
HP18 0JD

01296 658875

www.affinityhairdesign.co.uk

50% OFF

For new customers only*

*Terms and conditions apply (cut and
blow dry, use code NC50)

KC HOGAN

BUSINESS
SERVICES



ACCOUNTANTS & TAX ADVISORS

- Accounts for Sole Traders and Companies
- Self Assessment
- VAT
- Bookkeeping
- Payroll

To find out how we can help, email
sean@kchoganbusinessservices.co.uk
or call 07817 415 259





The Aylesbury Vale Academy

RESPECT | ASPIRATION | RESILIENCE

The Big Legal Lesson 2024

In March we took part in the national Big Legal Lesson 2024. The law is a vital part of our democratic society. Understanding how it works is therefore essential to being an active and engaged citizen. During the week tutor groups learnt all about democracy and the rule of law. One of our Year 11 students Ana-Gabriela R is an aspiring lawyer, she put together her understanding of legal system in the UK.

The law can have a big impact on the lives of 16-year-olds. They may have certain rights and responsibilities, but there are also restrictions in place to ensure their safety and well-being.

At 16 years old, there are certain laws that can affect different aspects of a person's life. Some common areas include:

- 1. Education:** At this age, laws may determine whether you can leave school, pursue further education, or choose a specific career path.
- 2. Employment:** There may be restrictions on the type of work you can do, the number of hours you can work, and the minimum wage you are entitled to.
- 3. Driving:** Laws regarding learner's permits and driver's licenses vary by country and region, so it's important to familiarize yourself with the requirements in your area.
- 4. Consent:** Laws related to consent for certain activities, such as medical procedures or relationships, may vary depending on your jurisdiction.
- 5. Criminal Responsibility:** In some legal systems, the age at which a person can be held fully accountable for their actions may be 16 or may vary depending on the offense committed.

Remember, laws can differ between countries and regions, so it's important to consult local resources or seek legal advice for specific information regarding your situation.

Our tutor groups worked together to define what the word law means. Here are a few of them:

- Rules and penalties that governs how we behave in the society.
- A set of rules set by the government which if broken will be punished by these laws.
- Barriers to balance and regulate society and to keep us safe.
- Rules that are set that people must follow or otherwise face certain consequences.
- Group of rules that keep people disciplined
- Rules that keep the peace and order of society



AN EVENING WITH **MICHAEL FOALE**

BRITISH-AMERICAN ASTRONAUT
INDUCTED INTO THE NASA
HALL OF FAME IN 2017

**COME AND MEET ONE OF THE
GREATEST ASTRONAUTS OF ALL TIME!**



TUE MAY 7th
7pm - 8.00pm - doors open 6.30pm



AYLESBURY VALE ACADEMY
Paradise Orchard, HP18 0WS

£10 ENTRY
Tickets on the door

NASA ASTRONAUT MICHAEL FOALE:

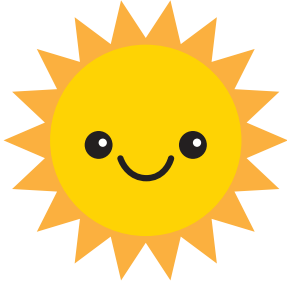
- Foale has been into space 6 times
- Performed 4 space walks
- Helped repair the Hubble Space Telescope in 1999
- Has flown 5 space shuttle missions and one Soyuz
- Commanded the ISS in 2004 for 6 months
- The first NASA astronaut to spend over a year in space
- Survived the Mir Space Station crash in 1997



Astronaut visit

On Tuesday 7 May AVA will welcome NASA Hall of Fame Astronaut Michael Foale in to give a talk to the community. Michael has been into space six times, has performed four space walks and helped repair the Hubble Space Telescope in 1999. He is the first NASA astronaut to spend more than a year in space and survived the Mir Space Station Crash in 1997.

HOW DOES THE
SUN LISTEN
TO MUSIC?



ON THE RAY-DIO

WHAT KIND OF
GARDEN DOES A
BAKER HAVE?



A FLOUR GARDEN

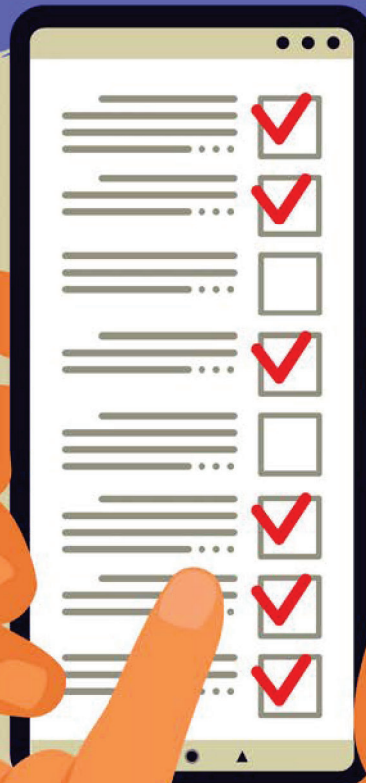
HOW DOES A BEE
BRUSH ITS HAIR?



WITH A HONEYCOMB

BERRYFIELDS PARISH COUNCIL QUESTIONNAIRE

We want
your
opinion!



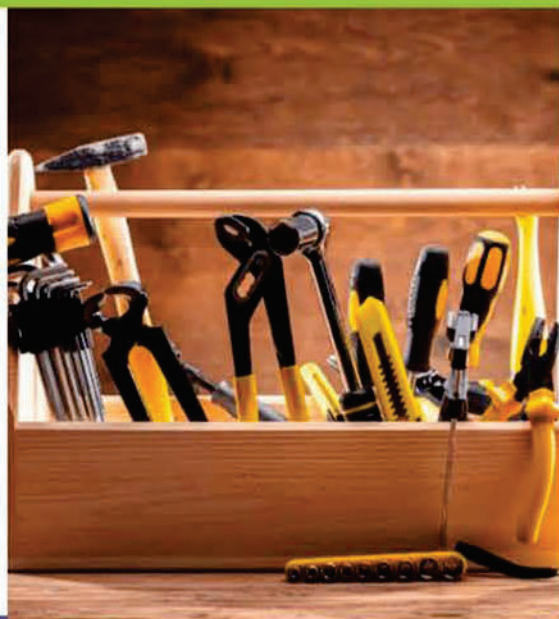
Scan the code and
complete the
questionnaire:



BORROW - DON'T BUY!

We are a tool and equipment borrowing scheme open to all Buckinghamshire residents, which aims to:

- Strengthen community resources
- Encourage collaborative consumption and peer-to-peer borrowing
- Ensure that everyone has access to the tools they need to be able to carry out household maintenance without having to rely on expensive tool hire or purchase
- Reduce carbon emissions and resource consumption
- Reduce waste at landfill sites



Types of items available:

DIY, Hobby, Crafts, Gardening, Leisure, Outdoors, Sports & Domestic

Ways you can help us:

Share our posts or invite local people to our page

Volunteer your time

DONATE

Donate to help cover our costs

Donate your unwanted items

Help us to run a repair cafe

We need volunteers, handy repair people, donations, and input from the local community to make this community project work.

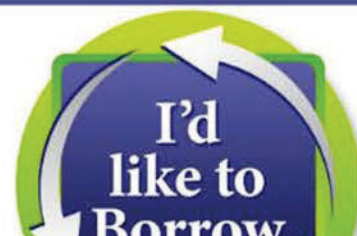
If you would like to use the service please register on our website.

If you would like to make a donation, arrange collection for a donated item, or get involved as a volunteer, please email info@idliketoborrow.com



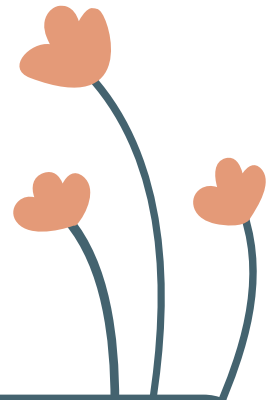
Visit www.idliketoborrow.com

to register or find out more





Spring Word Search



Can you find the words hidden in the puzzle?

C	S	N	U	R	A	I	N	B	O	W	D
F	N	L	P	M	H	K	O	R	T	U	P
L	A	D	Y	B	U	G	O	E	I	R	I
O	W	E	O	L	A	R	B	E	E	I	C
W	B	Y	M	O	S	F	N	Z	D	C	N
E	E	G	U	S	F	O	C	E	I	K	I
R	L	B	R	S	T	T	R	U	S	O	C
S	L	D	B	O	K	I	I	A	G	S	A
R	R	P	R	M	W	E	C	T	I	U	N
S	P	R	O	U	T	S	T	O	R	N	S
D	F	C	O	N	F	O	V	L	U	N	N
A	S	B	U	T	T	E	R	F	L	Y	E

FLOWERS

BREEZE

RAINBOW

BEE

BLOSSOM

SUNNY

LADYBUG

RAIN

BUTTERFLY

PICNIC

SPROUTS

GROW



Star Gleam
EDUCATION

WE ACCEPT
CHILDCARE
VOUCHERS

UPCOMING FULL FACE TO FACE QE & BUCKS MOCK EXAMS

(GET DETAILED SUBJECT SCORES AND FREE ANALYSIS ON ENGLISH PAPER
ON SUNDAY FROM 6PM TO 7PM)

MAY	JUNE	JULY	AUGUST
12/05/2024	09/06/2024	07/07/2024	04/08/2024
19/05/2024	16/06/2024	28/07/2024	25/08/2024
26/05/2024	23/06/2024		
ON SUNDAY (Below dates)			

BOOK ONLINE:

OPTION TO WRITE QE,HBS AND BUCKS
MOCK PAPERS : 4 - QE/HBS / 6 -BUCKS

EACH MOCK EXAM @£25
OR
BUNDLE OF 5 MOCK EXAMS @£100
OR
BUNDLE OF ALL 10 EXAMS, @ 190

**EVERY SUNDAY
10:30 TILL 12:30
BROUGHTON
JUNIOR
SCHOOL,37
PARTON RD,
AYLESBURY
HP20 1NG.**

WWW.STARGLEAMEDUCATION.COM
INFO@STARGLEAMEDUCATION.COM

CONTACT

SUNITHA GRANDHI 07726018288
PARUL SRIVASTAVA : 07405093081

WE ACCEPT
CHILDCARE
VOUCHERS

YEAR-4/5 ADMISSIONS

NOW OPEN



Star Gleam
EDUCATION

11+ Year 4: 2024-25 BATCH

FACE-TO-FACE; SMALL GROUP SESSIONS
EVERY WEEK SUNDAY 10:30 till 12:30 PM
AT: BROUGHTON JUNIOR SCHOOL, 37 Parton Rd, Aylesbury
HP20 1NG

EVERY WEEK MONDAY 4:30 PM-6:30 PM
AT: ROMAN PARK HALL;
HP18 0YT

Register Today from
www.stargleameducation.com

Your Kids Deserve
The Best Education

MORE INFO

EMAIL: INFO@STARGLEAMEDUCATION.COM
PHONE: 07726018288 / 07405093081

CHECK OUR GOOGLE & FACEBOOK REVIEWS
FOR OUR SUCCESS STORIES FROM OUR BELOVED PARENTS



10%
DISCOUNT UNTIL
31ST MAY

£250
PER MONTH
(ALL
INCLUSIVE)

- 2 hrs session every week
- Subscriptions to BOND & CGP are Included
- All Materials included
- Weekly Mock Exams included from Y5
- Christmas Everyday sessions included.
- Easter holidays everyday session included.
- Online Wordbank/Vocabulary sessions are included

WE ACCEPT
CHILDCARE
VOUCHERS



Star Gleam
EDUCATION

SCHOLARSHIP TO THOSE WHO
ATTAIN 80%



FREE YEAR-4 ASSESSMENT

ONLINE ON MAY 12TH 2024

Register Today from the link
provided
www.stargleameducation.com

Your Kids Deserve
The Best Education

MORE INFO

EMAIL: INFO@STARGLEAMEDUCATION.COM
PHONE: 07726018288 / 07405093081

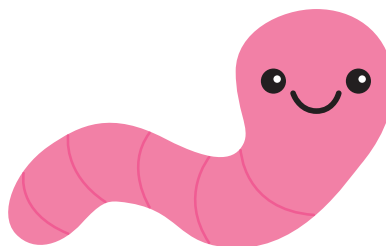
CHECK OUR GOOGLE & FACEBOOK REVIEWS
FOR OUR SUCCESS STORIES FROM OUR BELOVED PARENTS

WHAT GOES UP WHEN THE RAIN COMES DOWN?



AN UMBRELLA

WHAT DID THE BIRD SAY TO THE WORM?

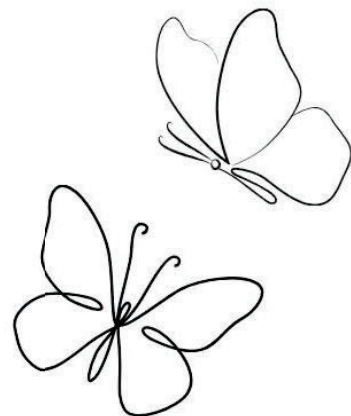
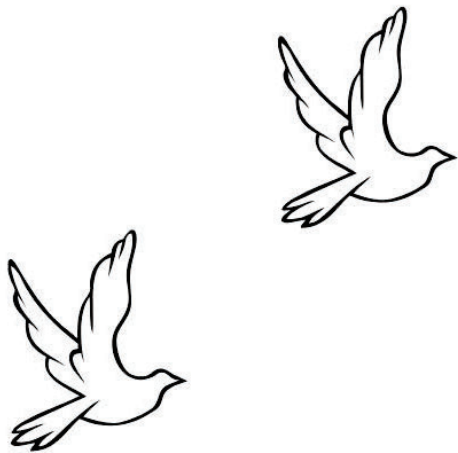


IT WILL CATCH YOU LATER

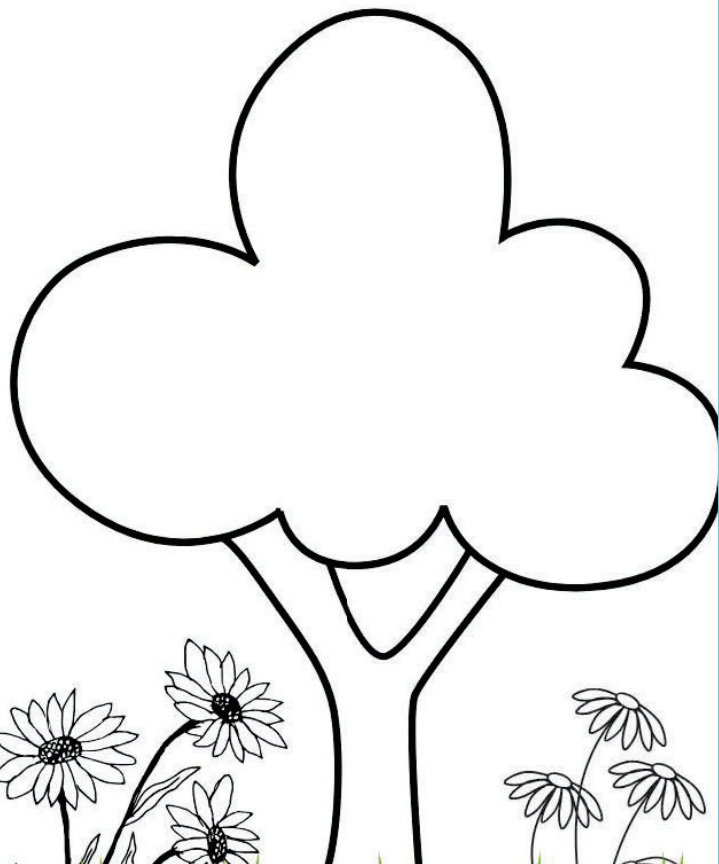
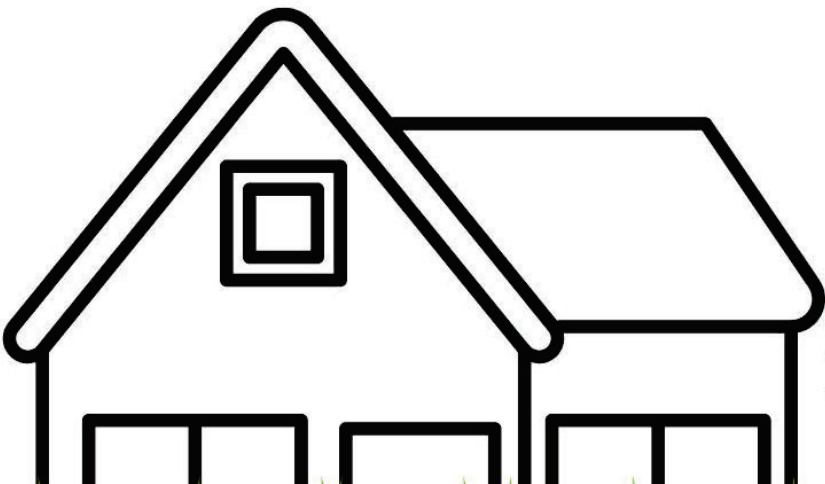
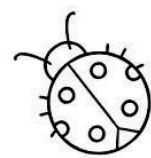
WHAT IS AT THE END OF A RAINBOW?



THE LETTER U



kids corner



ESQUIRES
THE ORGANIC COFFEE CO.

ESQUIRES COFFEE

Lucas



10% OFF
HOT DRINKS
TILL 9 AM

CUMBERLAND
ROLL W/ COFFEE

£6.95

CAKE &
COFFEE

£6.95

Open till 8pm

ESQUIRES COFFEE

A. Jackson

FOLLOW US
@ESQUIRESCOFFEE/LUCAS